

iARTS
D E C O R



www.iartsdecor.com

我之藝術有限公司

Tel +886-2-2778-6908

E-mail/ jliu@iartsdecor.com

台北市大安區仁愛路三段 5 巷 1 弄 21-1 號

Ren Ai Rd, Sec 3, Ln 5, Aly 1, No 21-1, Taipei City



iARTs gallery promotes artful living, creating elegant complimentary environments by merging design with contemporary art. We collaborate with architects, interior designers, and luxury property developers, to create elegant timeless interiors and exteriors. We welcome inquiries on private commissions tailor-made for your choice of expression.

iARTs 藝廊將空間設計與當代簡約相結合，營造優雅環境，進而提升生活美學。我們與建築、室內設計師以及豪宅建商合作，在室內和戶外景觀設計中融入高雅永恆的藝術品。誠摯歡迎私人委託，根據您的需求訂製專屬於您的藝術品。





MARI-RUTH ODA



MARI-RUTH ODA 小田・瑪莉露絲

JAPAN 日本

Mari-Ruth Oda is a Japanese artist based in North Wales. Her serene, emotive sculptures reflect her fascination with fluid lines and natural forms, in materials such as jesmonite, resin and stoneware ceramics. Drawing inspiration from sinuous lines found in nature, Mari-Ruth Oda's sculptures instill a sense of calm and fluidity in the eye of the beholder.

The concept of "kami", which in the Japanese Shinto religion are supernatural entities that inhabit all things, largely informs Mari-Ruth's work. The term "kami" is conceptually fluid, vague and imprecise, and her sculptures seem to embody this sense of ambiguity in a very elegant manner. They are neither one thing nor another, their shapes open to interpretation and subjective emotional response.

She has undertaken commissions from all over the globe and her artworks have been exhibited internationally including the Royal Academy of Arts London, Shigaraki Ceramic Cultural Park in Japan, Musée de Carouge in Switzerland and the Victoria & Albert Museum of London.

小田・瑪莉露絲是一位日本藝術家，現居北威爾斯。她的雕塑作品寧靜而富有情感，反映了她對流暢線條和自然形態的迷戀，其材料包括水性樹脂、樹脂和陶。小田・瑪莉露絲的雕塑作品從大自然中蜿蜒的線條中汲取靈感，帶給觀賞者一種平靜與流動的感覺。

在日本神道教中，「神」是居住在萬物中的超自然實體，這一概念深刻影響了她的創作。「神」的概念是多變的、模糊的、不精確的，而她的雕塑作品優雅地體現了這種模糊感。它們既非此亦非彼，其形態既可以被解讀，也能引發觀賞者的主觀情感反應。

她經手世界各地的藝術委託，也參與國際性展覽展，包括倫敦皇家藝術學院、日本陶藝之森、瑞士卡魯日博物館以及倫敦維多利亞與艾伯特博物館。



Bean Mobius III
Mari-Ruth Oda | JP
Marble, Jesmonite
64x45x15cm

莫比烏斯豆 III
小田・瑪莉露絲 | 日本
水性樹脂、大理石



Whole

Mari-Ruth Oda | JP

Ceramic

38x40x15cm

完全

小田・瑪莉露絲 | 日本

水性樹脂



Transmute

Mari-Ruth Oda | JP

Jesmonite

35x21x9cm

嬗變

小田・瑪莉露絲 | 日本

水性樹脂



Whole III
Mari-Ruth Oda | JP
Jesmonite
162x127x51cm

完全 III
小田・瑪莉露絲 | 日本
水性樹脂



Triangular Mobius
Mari-Ruth Oda | JP
Jesmonite
60x45x15 cm

三角莫比烏斯
小田・瑪莉露絲 | 日本
水性樹脂



Listening to the Whispers

Mari-Ruth Oda | JP
Bath stone Jesmonite
35x23x11cm

聆聽微風

小田・瑪莉露絲 | 日本
水性樹脂



Fuku

Mari-Ruth Oda | JP
Ceramic
20x16x9cm

福

小田・瑪莉露絲 | 日本
陶瓷



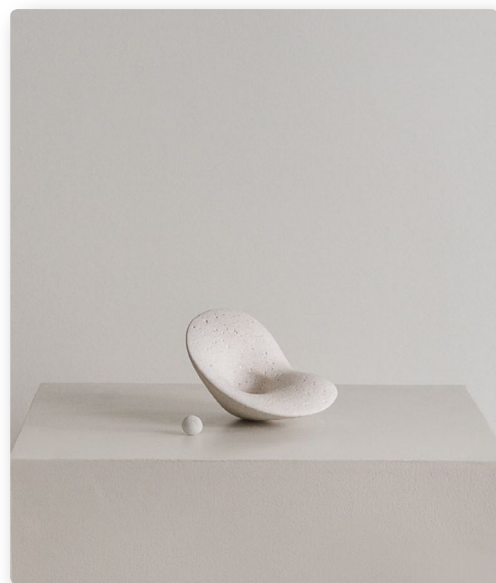


A Book That Feeds

Mari-Ruth Oda | JP
White marble Jesmonite
8x12x11cm

求知若渴

小田・瑪莉露絲 | 日本
白色大理石、水性樹脂



Planet inside a Flower

Mari-Ruth Oda | JP
Natural stone Jesmonite
7x15x12cm

花中星球

小田・瑪莉露絲 | 日本
天然石、水性樹脂



Seating Under a Tree

Mari-Ruth Oda | JP
Yellow sandstone Jesmonite
15x12x17cm

在樹下

小田・瑪莉露絲 | 日本
黃砂岩、水性樹脂



Kaguya

Mari-Ruth Oda | JP
Jesmonite
15x7x6cm

輝耀姬

小田・瑪莉露絲 | 日本
水性樹脂



Seedling
Mari-Ruth Oda | JP
Portland stone Jesmonite
29x18x10cm

芽生
小田・瑪莉露絲 | 日本
波特蘭石、水性樹脂



Flowering Bird of Book
Mari-Ruth Oda | JP
Bath stone Jesmonite
17x23x17cm

書中花鳥
小田・瑪莉露絲 | 日本
水性樹脂



Wa
Mari-Ruth Oda | JP
White marble Jesmonite
29x27x8cm

哇
小田・瑪莉露絲 | 日本
水性樹脂



Moose Dream Protection
Mari-Ruth Oda | JP
Natural stone Jesmonite
25x34x10cm

捕夢者
小田・瑪莉露絲 | 日本
天然石、水性樹脂



Watery Moon
Mari-Ruth Oda | JP
Bath stone Jesmonite
49x45x24cm

月光海
小田・瑪莉露絲 | 日本
巴斯石灰石、水性樹脂



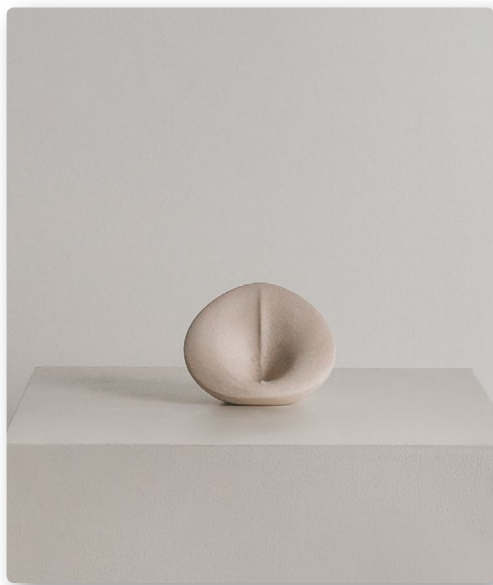
Bean Mobius II
Mari-Ruth Oda | JP
White marble Jesmonite
40x30x9cm

莫比烏斯豆
小田・瑪莉露絲 | 日本
白色大理石、水性樹脂



I Hear You
Mari-Ruth Oda | JP
Bath stone Jesmonite
41x24x15cm

傾聽
小田・瑪莉露絲 | 日本
巴斯石灰石、水性樹脂



Peach Wisdom
Mari-Ruth Oda | JP
Bath stone Jesmonite
10x13x9cm

桃子的智慧
小田・瑪莉露絲 | 日本
水性樹脂



Me, Myself and I
Mari-Ruth Oda | JP
Bath stone Jesmonite
12x16x8cm

內觀
小田・瑪莉露絲 | 日本
巴斯石灰石、水性樹脂



Sound of a Lily
Mari-Ruth Oda | JP
Jesmonite
12x11x4cm

百合之聲
小田・瑪莉露絲 | 日本
水性樹脂



Samara
Mari-Ruth Oda | JP
Jesmonite
12x13x5cm

薩馬拉
小田・瑪莉露絲 | 日本
水性樹脂



Bean

Mari-Ruth Oda | JP

Stoneware

44x72x64cm

豆豆椅

小田・瑪莉露絲 | 日本

炻器



Flower Seat

Mari-Ruth Oda | JP

White marble Jesmonite

76x76x57cm

賞花椅

小田・瑪莉露絲 | 日本

白色大理石、水性樹脂



The Source
Mari-Ruth Oda | JP
Resin Fibreglass
225x85x54cm

起源
小田・瑪莉露絲 | 日本
樹脂玻璃纖維



See
Mari-Ruth Oda | JP
Resin Fibreglass
55x43x20cm

領會
小田・瑪莉露絲 | 日本
樹脂玻璃纖維



White Round Form
 Mari-Ruth Oda | JP
 Resin Fibreglass
 58x69x38 cm

形的留白

小田・瑪莉露絲 | 日本
 樹脂玻璃纖維



Be
 Mari-Ruth Oda | JP
 Resin Fibreglass
 130x150x66 cm

存在

小田・瑪莉露絲 | 日本
 樹脂玻璃纖維



Whole II
 Mari-Ruth Oda | JP
 Jesmonite
 88x316x57cm

完全 II
 小田・瑪莉露絲 | 日本
 水性樹脂

Whole I
 Mari-Ruth Oda | JP
 Jesmonite
 90x135x83cm

完全 I
 小田・瑪莉露絲 | 日本
 水性樹脂





Corinthia sculptural series

Mari-Ruth Oda | JP

Jesmonite

科林西亞雕塑系列

小田・瑪莉露絲 | 日本
水性樹脂

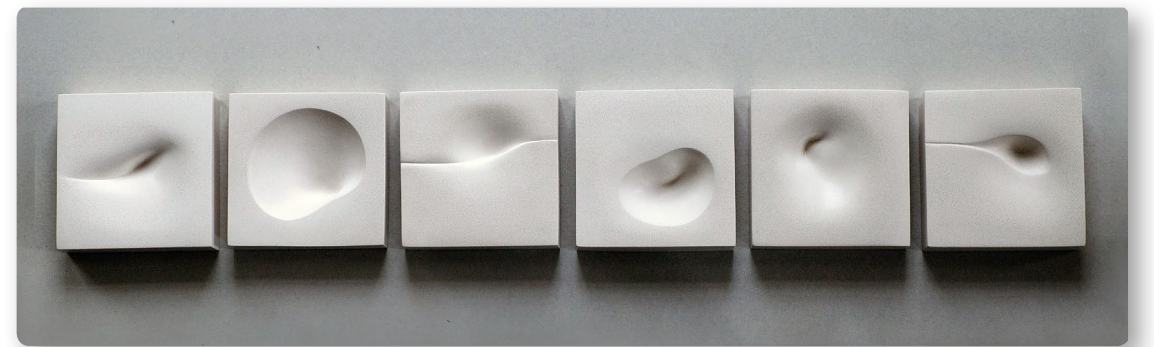


Meandering

Mari-Ruth Oda | JP
Bath stone Jesmonite
25x175x6cm

蜿蜒

小田・瑪莉露絲 | 日本
巴斯石灰石、水性樹脂



Space Between The Lines

Mari-Ruth Oda | JP
Jesmonite
25x150x6cm

線條間的留白

小田・瑪莉露絲 | 日本
水性樹脂



Wave Whispers

Mari-Ruth Oda | JP
Bath stone Jesmonite
25x25x7cm

浪之聲

小田・瑪莉露絲 | 日本
巴斯石灰石、水性樹脂



Here

Mari-Ruth Oda | JP
Bath stone Jesmonite
25x25x7cm

當下

小田・瑪莉露絲 | 日本
巴斯石灰石、水性樹脂



Core

Mari-Ruth Oda | JP
Bath stone Jesmonite
25x25x7cm

冥想

小田・瑪莉露絲 | 日本
巴斯石灰石、水性樹脂



Book Seed

Mari-Ruth Oda | JP
Bath stone Jesmonite
25x25x7cm

種子書

小田・瑪莉露絲 | 日本
巴斯石灰石、水性樹脂



Dissolve

Mari-Ruth Oda | JP
Bath stone Jesmonite
25x25x7cm

幻景

小田・瑪莉露絲 | 日本
巴斯石灰石、水性樹脂



Crescent Eclipse

Mari-Ruth Oda | JP

Jesmonite

100x74x12cm

新月

小田・瑪莉露絲 | 日本
水性樹脂



Unfurling

Mari-Ruth Oda | JP

Jesmonite

100x74x14cm

展開

小田・瑪莉露絲 | 日本
水性樹脂



Wavelength

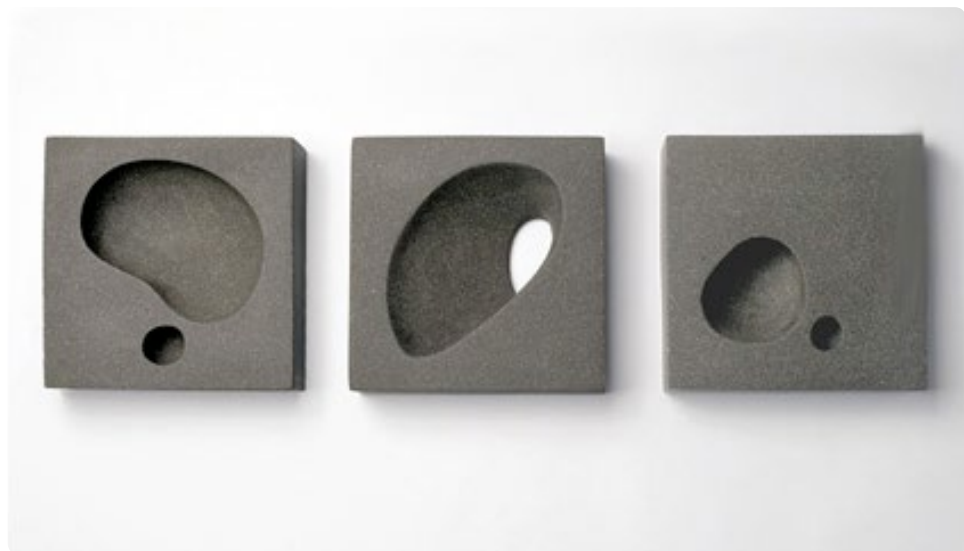
Mari-Ruth Oda | JP

Stoneware ceramic

80x20x6cm

展開

小田・瑪莉露絲 | 日本
水性樹脂



Rockpool Holes
Mari-Ruth Oda | JP
Stoneware Ceramics
25x25x6cm

岩池
小田・瑪莉露絲 | 日本
陶瓷



學歷

EDUCATION

- 1996-1997 University of Wolverhampton: MA in Art and Design Network:
Ceramics (Distinction)
- 1993-1996 Manchester Metropolitan University: BA(Hons) Three
Dimensional Design: Wood/Metal/Ceramics & Glass (2:1)
- 1992-1993 Middlesex University: Foundation Course in Art and Design

公共藝術收藏

PUBLIC COLLECTIONS

- 2002 Manchester Art Gallery, Manchester
- 2002 Shigaraki Ceramic Cultural Park, Shigaraki, Japan

獲獎紀錄

AWARDS

- 2012 Research and Development Grant, Arts Council of England
- 2011 Winner of 2nd Prize Award for East West Awards, London
- 2010 Shortlisted for National Sculpture Competition, Bluecoat Display
Centre, Liverpool
- 2000 Setting Up Grant Award, Crafts Council London
- 1999 Keith Godwin Award for Sculpture Manchester Academy of Fine Art

精選書籍

FEATURED BOOKS

- 2010 Who's Who in Art 34th Edition, Hilmarton Manor Press
- 2009 Wall pieces, by Dominique Bivar Segurado, A & C Black Publishers
London
- 1999 Raku, Investigation into Fire, by David Jones, Crowood Press

產品設計項目

PRODUCT DESIGN PROJECTS

- 2015 START in Salford, Manchester
- 2010 Capital Garden Products, Ticehurst, Kent
- 2008 Bathstore, London
- 2006 Acrylic Sit-ables, Barbed Ltd, London
- 2006 Bathstore, London
- 2002 Pebble by Myla, London

精選公共藝術與委託合作案例

SELECTED PUBLIC ART & CORPORATE COMMISSIONS

- 2023 CRCITY outdoor sculpture, Shenzhen, China
- 2023 Nagoya, The Tower, Courtyard sculpture, Nagoya, Japan
- 2020 Residential Building Entrance Courtyard, Taipei, Taiwan
- 2019 Victoria Skye Building, Hong Kong
- 2019 The Dubai Majlis Show Garden, Chelsea Flower Show, London
- 2018 SunCity Tachikawa, Tokyo with SWA Group
- 2016 Riverside Extra Care, Leads Road, Hull
Walton Centre, Liverpool
- 2011 Corinthia Hotel, London
- 2009 Changing Room plaques, Multi Agency Unit, The Learning Campus, Swindon
- 2008 Main Entrance, Multi Agency Unit, The Learning Campus, Swindon
Hotel Marielyst, Denmark
- 2007 Gulf Hotel, Manama, Kingdom of Bahrain
Cancer Research UK Show Garden, Chelsea Flower Show, London
- 2006 Brimble Hill School, Swindon
Uplands School, Swindon
Philimore of South Kensington, London
Pizza Express St Martin's Lane, London
- 2005 Baker Tilly, London
St. Regis Museum Hotel, San Francisco, USA
Cowley Manor Hotel and Spa Gardens, Cowley, Gloucestershire

- 2004 Reception Area, Philimores of Kensington, London
Westminster City Inn, London
- 2003 Jasmine, Bray, Berkshire
- 2002 Manchester Art Gallery Café/Conference Room, Manchester
Cowley Manor Hotel and Spa, Cowley, Gloucestershire
- 2002 Manchester Art Gallery, Manchester
- 2002 Shigaraki Ceramic Cultural Park, Shigaraki, Japan

精選展覽

SELECTED EXHIBITIONS

- 2024 3-man show, Francis Gallery, Los Angeles
- 2023 Hathor, TRNK, New York
- 2022 R W Guild, New York
- 2020 Solo Show, Francis Gallery, Bath
- 2018 Francis Gallery, 3-man Pop Up Show in London
- 2016 Eastern Aesthetics, Bluecoat Display Centre, Liverpool
- 2015 Whole Pinsent Masons, Bishopsgate, London
- 2014 108, Solo Show Cupola Gallery, Sheffield
- 2013 Barbed Pop Up at NEO Bankside, Southwark, London
Summer Exhibition, Gallerie Nummer 40, Doetinchem, Netherlands
- 2012 Whole: Solo Exhibition, Tameside Central Gallery, Ashton-under-Lyne,
Manchester
- 2011 East West Art Award Competition, La Galleria, Pall Mall, London
A bit of what you fancy and 20th Anniversary Show, Cupola Gallery,
Sheffield
- 2010 National Sculpture Competition, Bluecoat Display Centre, Liverpool
Japanese Jewellery Designers and Mari-Ruth Oda, Bluecoat Display
Centre, Liverpool
Off-White, Unit 12, Tixall, Stafford UK
- 2008 Shizen: Solo Exhibition, Cupola Gallery, Sheffield
Portfolio, Bluecoat Display Centre, Liverpool & Crafts Council of Ireland,
Kilkenny
COLLECT, Victoria and Albert Museum London & Bluecoat Display
Centre, Liverpool

- 2007 Summer Exhibition, Royal Academy of Arts, London
- 2006 594 Ceramicists, Shigaraki Ceramic Cultural Park, Shigaraki, Japan
Go Figure, Bluecoat Display Centre, Liverpool
2-man show with David Binns, Carlin Gallery, Paris, France
- 2005 Collectors Ireland, Crafts Council of Ireland, Kilkenny
Touch Me, Victoria and Albert Museum, London
Design-Imagination-Function-Production, The Study Gallery, Plymouth
- 2004 Genius, Cupola Gallery, Sheffield
Personal Selection, Brewery Arts, Cirencester
COLLECT, Victoria and Albert Museum London & Bluecoat Display Centre,
Liverpool
- 2003 What is Craft? The Hub, Sleaford, Lincolnshire
41st Asahi Ceramic Competition, Japan (tour)
City of Carouge Prize 2003, Musee de Carouge, Geneva, Switzerland
Summer Exhibition, The Scottish Gallery, Edinburgh
- 2002 Solo Show, Gallerie Maronie, Kyoto, Japan
- 2001 Solo Show, Cupola Gallery, Sheffield
Make Me Too, CUBE Gallery, Manchester
Make Me, Object Gallery, Sydney, Australia
- 2000 Raku, Rufford Crafts Centre, Newark
Garden Show, The Scottish Gallery, Edinburgh



MARI-RUTH ODA

我之藝術 iARTs Decor Co., Ltd
www.iartsdecor.com

T. 02-2778-6908 | No. 54283976

台北市大安區仁愛路三段5巷1弄21-1號