

iARTS
D E C O R



www.iartsdecor.com

我之藝術有限公司

Tel +886-2-2778-6908

E-mail/ jliu@iartsdecor.com

台北市大安區仁愛路三段 5 巷 1 弄 21-1 號

Ren Ai Rd, Sec 3, Ln 5, Aly 1, No 21-1, Taipei City



iARTs gallery promotes artful living, creating elegant complimentary environments by merging design with contemporary art. We collaborate with architects, interior designers, and luxury property developers, to create elegant timeless interiors and exteriors. We welcome inquiries on private commissions tailor-made for your choice of expression.

iARTs 藝廊將空間設計與當代簡約相結合，營造優雅環境，進而提升生活美學。我們與建築、室內設計師以及豪宅建商合作，在室內和戶外景觀設計中融入高雅永恆的藝術品。誠摯歡迎私人委託，根據您的需求訂製專屬於您的藝術品。





TOM PRICE



TOM PRICE 湯姆·普萊斯

UNITED KINGDOM 英國

Tom Price is an English artist born in London in 1973, currently living and working in Mallorca, Spain. Drawing on his training in both sculpture and design, Price's practice regularly delves into the grey areas between the two disciplines. Much of the work Price produces seeks to explore the untapped potential of familiar materials, encouraging them to behave in unfamiliar ways. This often requires developing machinery and tools that are capable of subverting conventional industrial manufacturing techniques, introducing a dose of entropy into what are typically very controlled processes. Chance is an essential element in this creative process, and one that Price relies on to transcend the limits of imagination.

Since graduating from London's Royal College of Art, Price has established an international career as an artist and designer with works in major collections and museums worldwide, including acquisitions by San Francisco MOMA, Denver Art Museum, Chatsworth House, The Nelson-Atkins Museum of Art, the MKG Hamburg and Amore Pacific Museum of Art in Seoul. He has also completed several large-scale sculptural commissions for public and private spaces.

湯姆·普萊斯是一位英國藝術家，1973年出生於倫敦，目前在西班牙馬略卡島生活和工作。鑑於普萊斯具備雕塑與設計雙重領域的訓練，讓他慣於探索這兩者的灰色地帶。普萊斯諸多的作品試圖探究為人所知悉的材質其未被開發的潛力，激發它演繹成未知的樣貌。這需要開發能夠顛覆傳統工業與製造業技術的機器具，使典型的控制歷程還摻上了些混亂。而機遇是創意生成的必要元素，普萊斯仰賴著這樣的機遇不斷超越想像的限制。

自倫敦皇家藝術學院畢業後，藉由全球各地藏家與美術館，包括舊金山現代藝術博物館、丹佛美術館、查茨沃斯莊園、納爾遜-阿特金斯藝術博物館、漢堡工藝美術館與首爾愛茉莉太平洋美術館的收藏，普萊斯開啟了國際藝術家與設計師的職業。至今已在公共與私人空間完成多件大型客製化的雕塑作品。



Synthesis

融合系列

Synthesis Collection | Tom Price

Synthesis is the study of a dialogue between two contrasting materials - resin and tar - and their negotiation for space and identity when forced to become a single unified entity.

Petal-like cracks and fissures formed through a careful manipulation of the catalysing process of the resin cluster and interact with amorphous invasive bodies of tar, which loom - apparently suspended in space. The tar initially appears densely black, almost light-absorbent, but upon closer inspection, a network of fine green vapour trails can be seen drifting from a surface partially melted by the exothermic reaction of the curing resin. As the tar heats it expands, searching for pathways within the resin and rushes to claim open fissures, creating wafer thin golden slivers of coral-like protuberances.

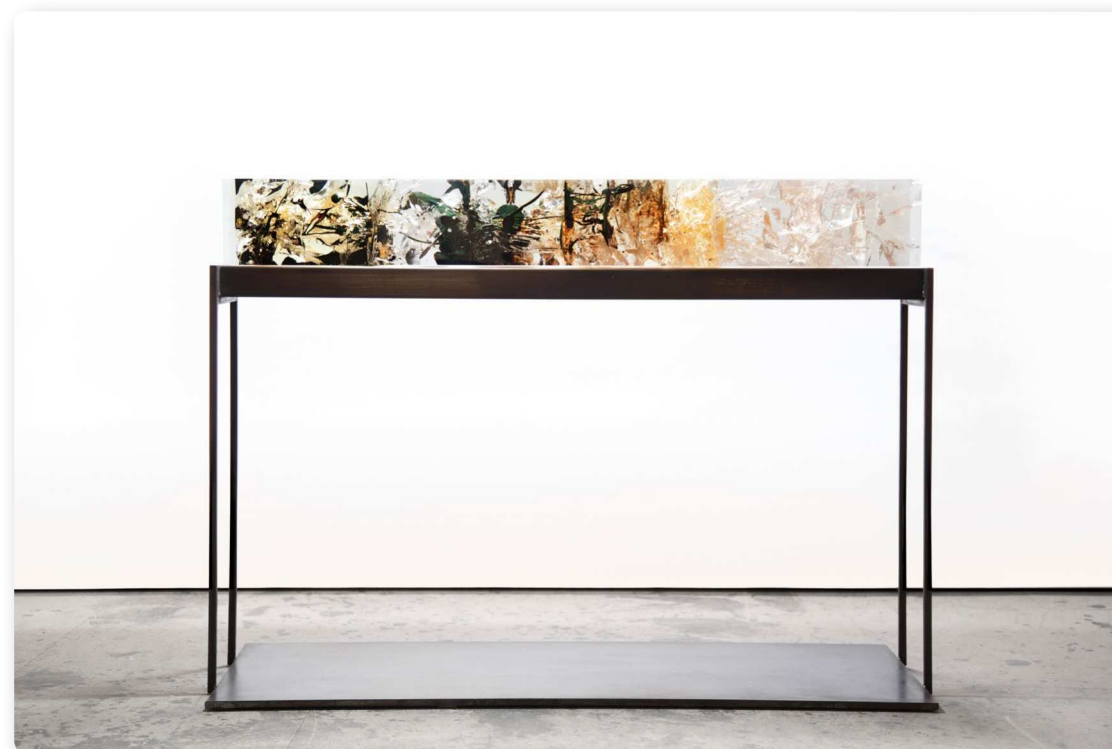
The effects of the synthesis of these two disparate elements - one black and dense; the other clear and liquid - results in a riot of colour and explosive formations that engage on both a macro and micro level.

融合系列 | 湯姆·普萊斯

融合系列作品鑽研著迥異的兩個元素－樹脂與焦油，兩者之對白以及交融整合成一體時，兩者在空間與各自特性中的談判。

在精心操作的催化過程中，樹脂棒與侵入而無定型的焦油相互作用，雕琢出花瓣般的裂紋與隙縫，在懸浮的空間盛放。最初，焦油呈現出高密度的焦黑，彷彿能夠吸納光線般，然一但湊近，得見在與樹脂產生熱反應下，局部溶解的表層拂過優美蒨鬱、霧氣蒸騰的綠色曲線。焦油加熱膨脹，在樹脂中迅速地找尋路徑，留下不規則裂隙，創造出金色破碎碳化般的變異形狀藝術。

融合系列反映出兩不相同元素，一為密集的烏黑；一為流體的澄澈，使色彩與形體的炸裂在宏觀與微小的視界中，碰撞出炫目的花火。

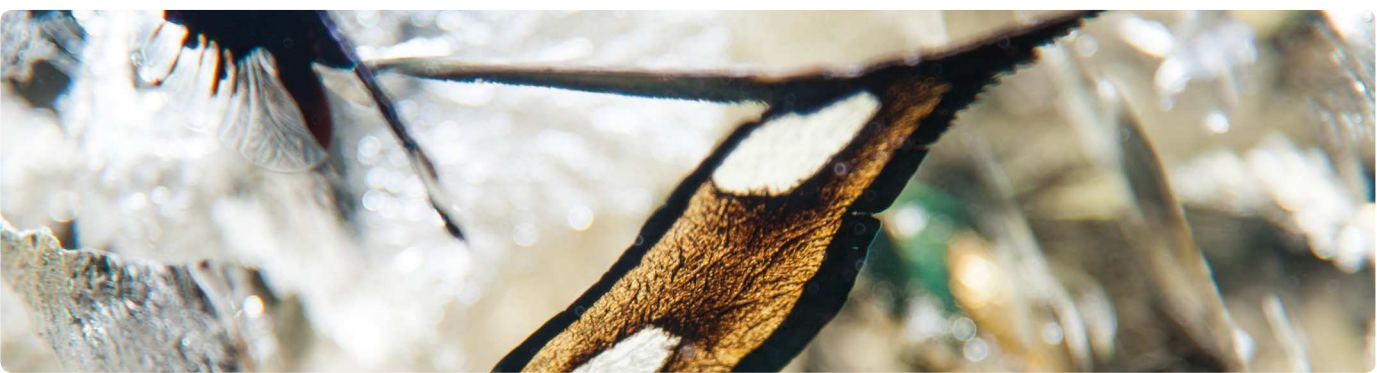


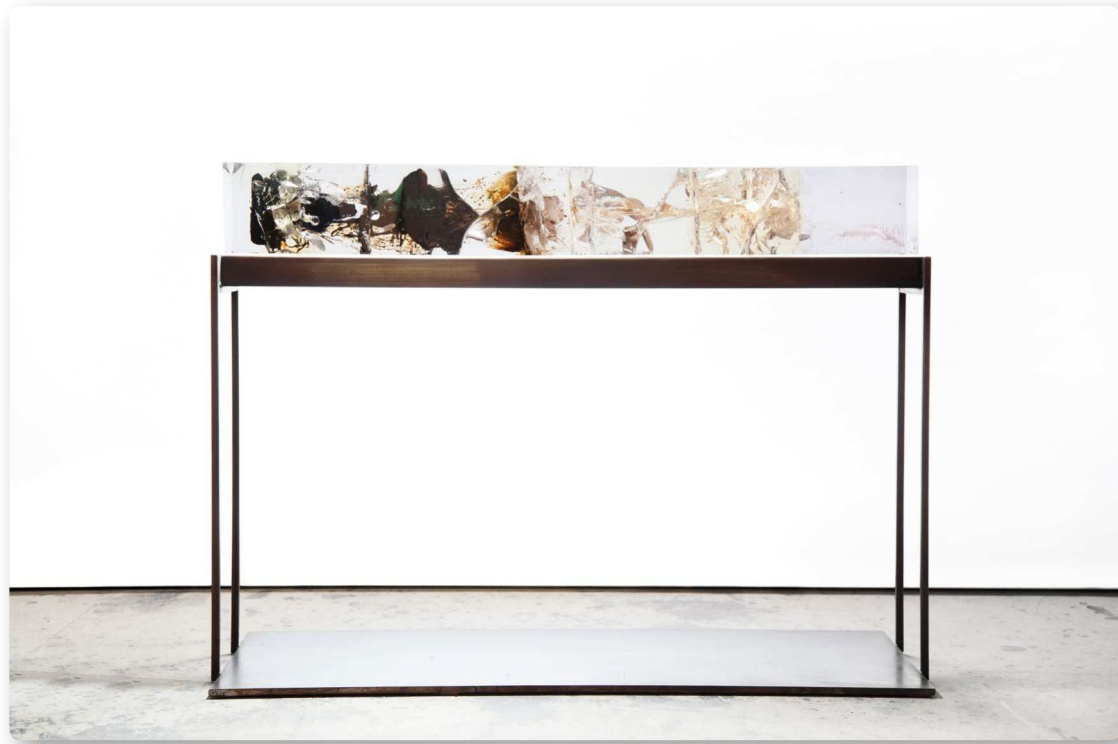
Synthesis L2

Tom Price | UK
Resin, tar, steel, acrylic, LED
85x117x40cm
(including stand)

融合 L2

湯姆·普萊斯 | 英國
樹脂、焦油、鋼、壓克力、LED
(尺寸包含檯座)





Synthesis L1

Tom Price | UK
Resin, tar, steel, acrylic, LED
85x117x40cm
(including stand)

融合 L1

湯姆·普萊斯 | 英國
樹脂、焦油、鋼、壓克力、LED
(尺寸包含檯座)



Synthesis L3

Tom Price | UK
Resin, tar, painted mild steel, acrylic, LED
85x118x40cm
(including stand)

融合 L3

湯姆·普萊斯 | 英國
樹脂、焦油、鋼、壓克力、LED
(尺寸包含檯座)





Synthesis B

Tom Price | UK

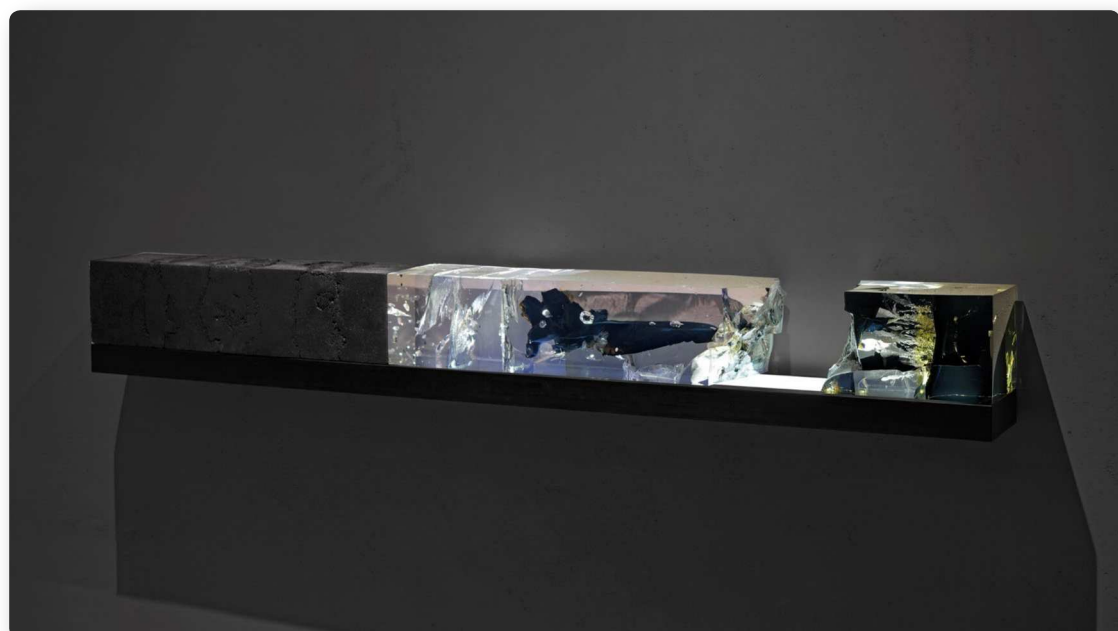
Resin, tar, steel, LED, acrylic, aluminium

200x8x11cm

融合 B

湯姆·普萊斯 | 英國

樹脂、焦油、鋼、LED、壓克力、鋁



Synthesis LC3

Tom Price | UK
Resin, tar, steel, acrylic, LED
20x150x16 cm

融合 LC3

湯姆·普萊斯 | 英國
樹脂、焦油、鋼、壓克力、LED



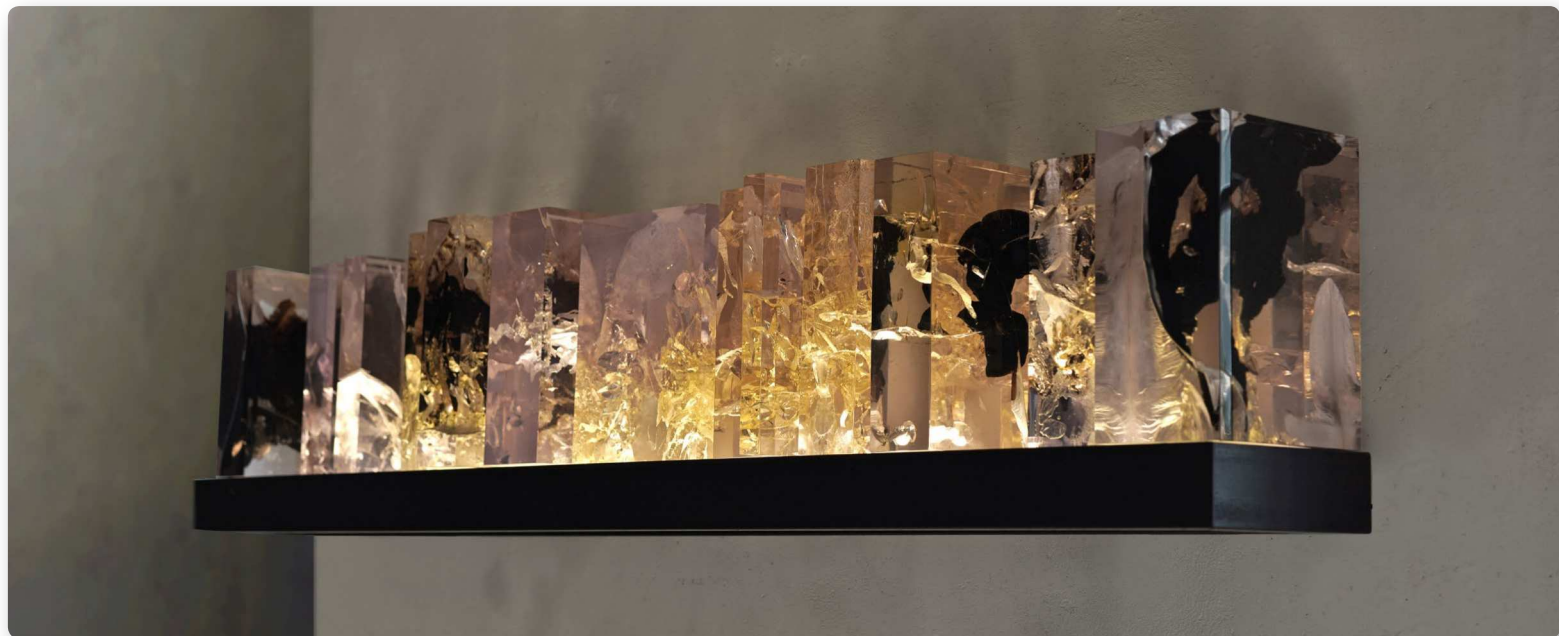
Synthesis L2

Tom Price | UK
Resin, tar, steel, acrylic, LED
85x117x40cm

融合 L2

湯姆·普萊斯 | 英國
樹脂、焦油、鋼、壓克力、LED





Synthesis A

Tom Price | UK

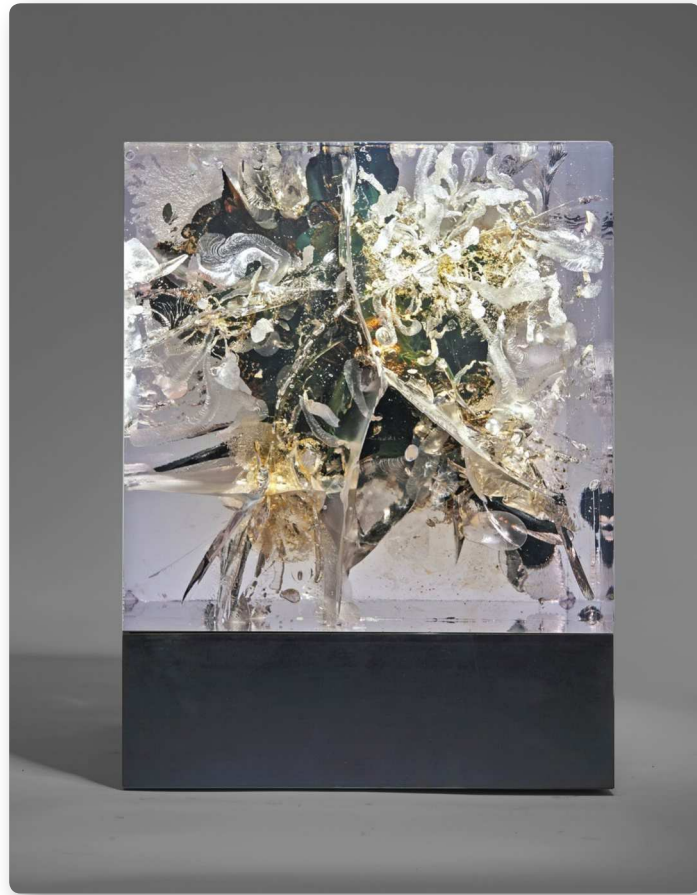
Resin, tar, steel, acrylic, LED

22x120x20cm

融合 A

湯姆·普萊斯 | 英國

樹脂、焦油、鋼、壓克力、LED



Synthesis C1

Tom Price | UK

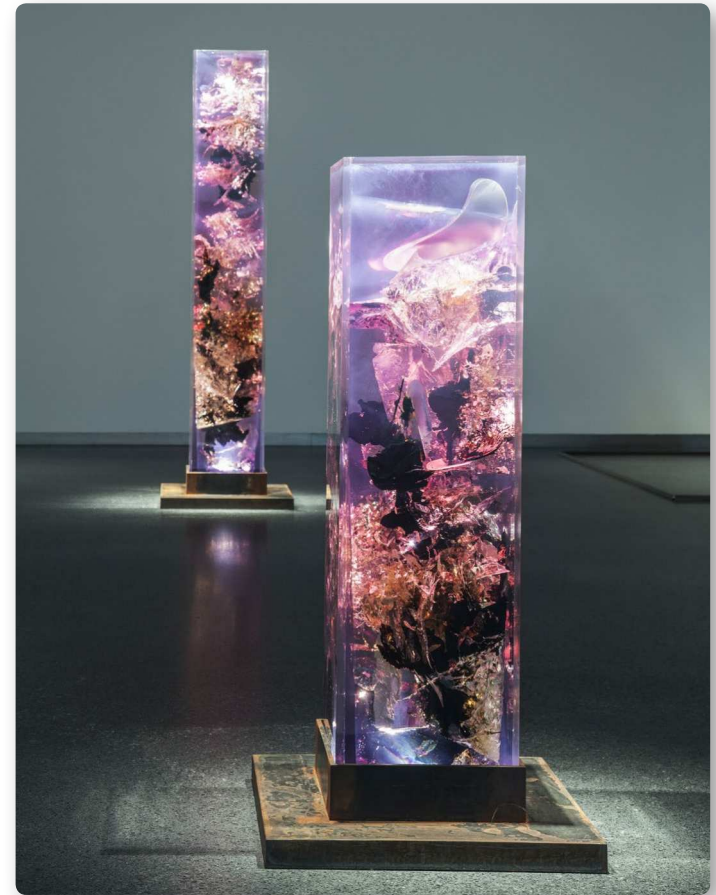
Resin, tar, steel, acrylic, LED

41x31x28cm

融合 C1

湯姆·普萊斯 | 英國

樹脂、焦油、鋼、壓克力、LED



Synthesis 1

Tom Price | UK

Resin, tar, steel, acrylic, LED

200x33x33cm

120x33x33cm

融合 1

湯姆·普萊斯 | 英國

樹脂、焦油、鋼、壓克力、LED



Synthesis F5

Tom Price | UK
Resin, tar, steel, acrylic, LED
25x24x25cm

融合 F5

湯姆·普萊斯 | 英國
樹脂、焦油、鋼、壓克力、LED



Synthesis F2

Tom Price | UK
Resin, tar, steel, LED
180x230x180cm

融合 F2

湯姆·普萊斯 | 英國
樹脂、焦油、鋼、LED



Synthesis 4 & 5

Tom Price | UK
Resin, tar, steel, acrylic, LED
35x150x20cm

融合 4 融合 5

湯姆·普萊斯 | 英國
樹脂、焦油、鋼、壓克力、LED

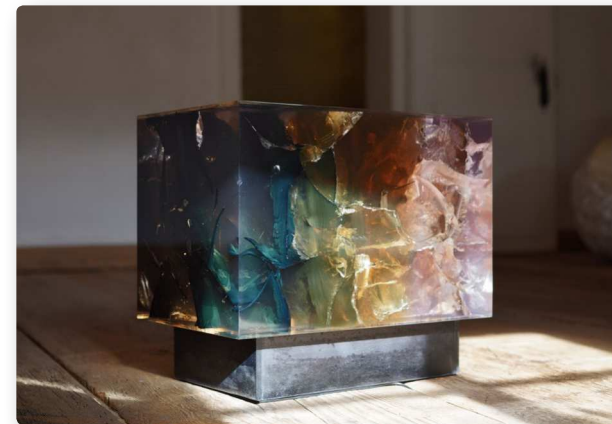


Synthesis 6

Tom Price | UK
Resin, tar, steel, acrylic, LED
45x35x60cm

融合 6

湯姆·普萊斯 | 英國
樹脂、焦油、鋼、壓克力、LED





Counterpart II

Tom Price | UK

Coal, Resin, tar, steel, jesmonite,
acrylic, LED

45x220x35cm

相映 II

湯姆·普萊斯 | 英國

煤、樹脂、焦油、鋼、

jesmonite、壓克力、LED



Counterpart

Tom Price | UK

Coal, resin, tar, steel, wood,
jesmonite, acrylic, LED

45x220x35cm

相映

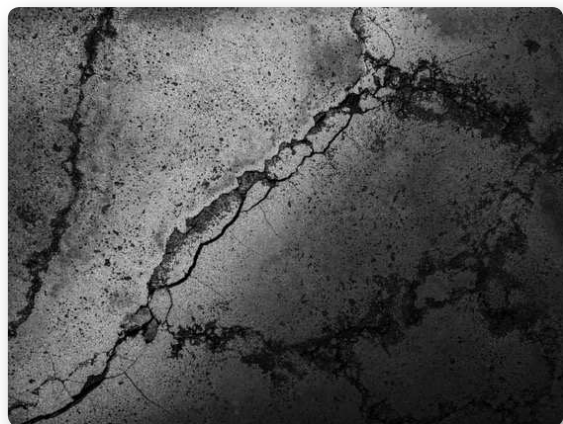
湯姆·普萊斯 | 英國

煤、樹脂、焦油、鋼、

jesmonite、壓克力、LED



Chatworth House, Derbyshire, United Kingdom



Counterpart Coal

Tom Price | UK

Coal, steel, resin, wood

45x210x35cm

相映一黑

湯姆·普萊斯 | 英國

煤、鋼、樹脂、木頭



Counterpart

Tom Price | UK

Resin, tar, steel, jesmonite, acrylic, LED

45x210x35cm

相映一光

湯姆·普萊斯 | 英國

樹脂、焦油、鋼、jesmonite、

壓克力、LED



Trysting Trees

永生樹

Trysting Trees | Tom Price

Trysting Tree, explores the dialogue of nature and life, mimicking the poetry and transience of the natural world. Historically, trysting trees are places to gather and meet.

The tree is not intended to be an accurate representation of natural forms, but is designed to evoke an atmosphere similar to what one might experience witnessing a cherry tree in full bloom. Trysting Trees can be designed to hang on walls, ceiling, or as freestanding sculpture.

永生樹 | 湯姆·普萊斯

永生樹，探索著大自然與生命的對白，臨摹自然界凍結的剎那與詩意。在時間的縱軸上，人們在永生之樹下相逢相會。

樹的輪廓並無意圖準確的代表自然的形體，而是為了勾勒賞析櫻花樹或蒨鬱或盛放之雙重景色。永生樹系列可以設計作為在牆面及天花板的掛飾，以及獨立雕塑藝術。



Trysting Tree
Tom Price | UK
Polypropylene pipe

永生樹—暉
湯姆·普萊斯 | 英國
聚丙烯管

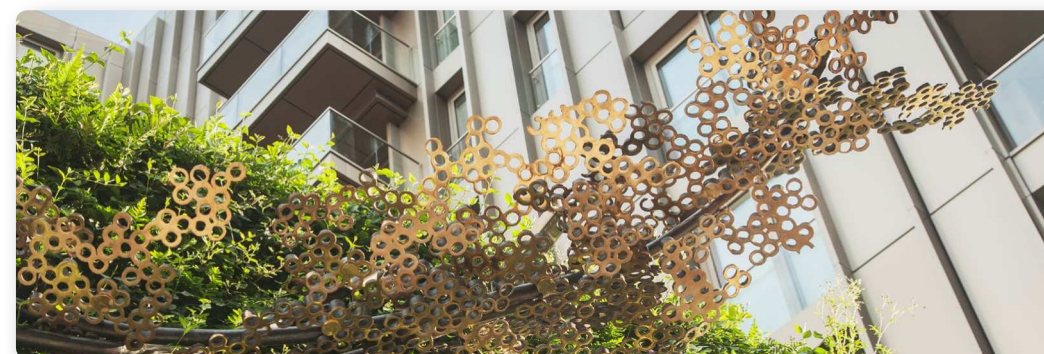
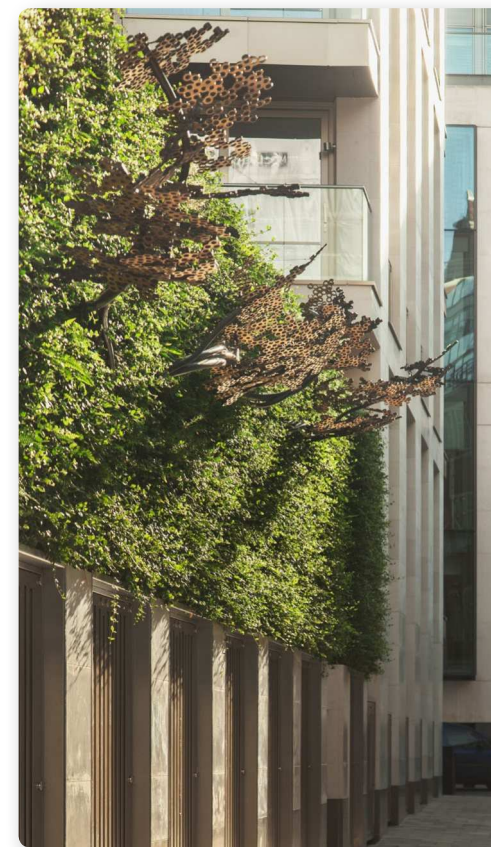
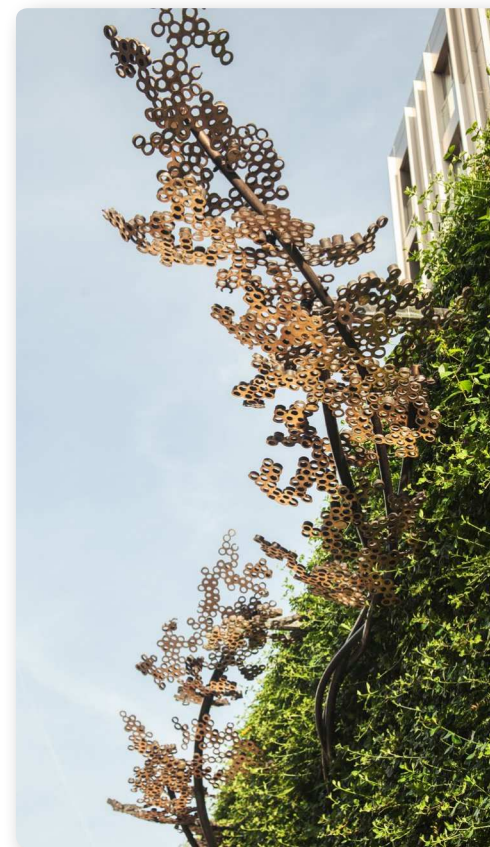




Trysting Tree

Tom Price | UK
Bronze

永生樹－耀
湯姆·普萊斯 | 英國
銅

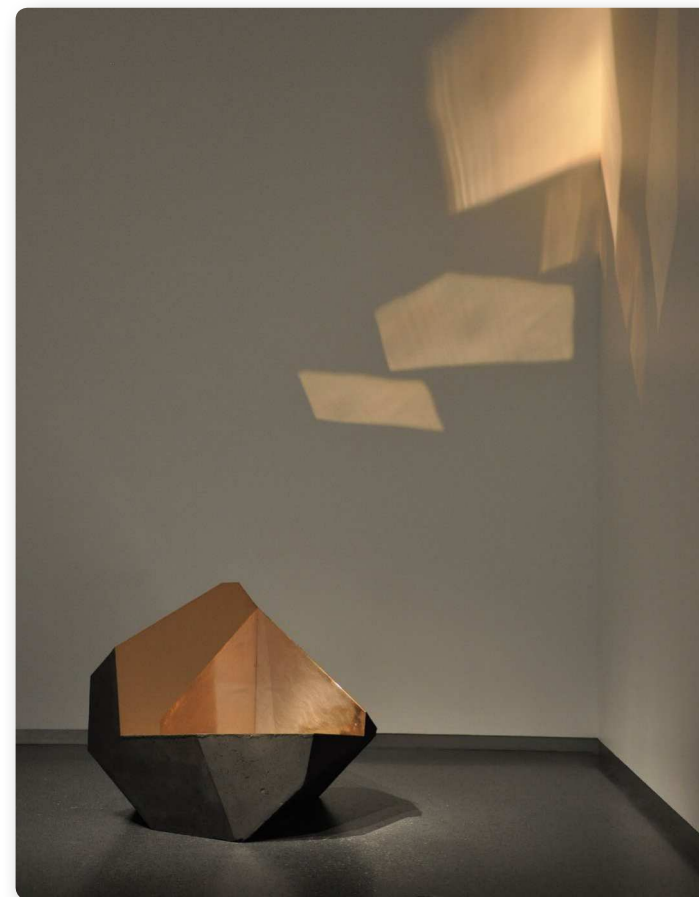


Carbon Void | Tom Price

The Carbon Void Series explores the notion of absence as a signifier of function. Made to human scale the works examine through simple geometry our relationship with objects and the architecture of what we create to house and support the human form. Resting on one of its facets the inner void may become functional as a seat or container; placed on another it loses its function and becomes purely sculptural.

合璧 | 湯姆·普萊斯

合璧生暉系列構思著如何在建築內部，虛無之中，藉由幾何切面角度的差異、光線的編織，與空間對話，相映相暉，產生不可思議的室內氛圍。藝術家在幾何上的探索，不止於稜與線，還帶著幽默的巧思在其中，以符合人體工學的高度與角度，在看起來像是茶几與座椅的物件上，抹去其應如外表所擁有功能性，而後成就一件純粹的雕塑。



Carbon Void Blue

Tom Price | UK
Resin, coal, jesmonite, wood
100x100x100cm

合璧一藍

湯姆·普萊斯 | 英國
樹脂、煤、jesmonite、木頭

Carbon Void Bronze

Tom Price | UK
Bronze, coal, jesmonite, wood
100x100x100cm

合璧一金

湯姆·普萊斯 | 英國
黃銅、煤、jesmonite、木頭

Meltdown Chair | Tom Price

Meltdown chairs are created by heating and pressing a seat-shaped former into a ball of polypropylene rope. The rope begins to liquefy as it comes into contact with the heated former and, as it cools, it sets in the shape of a seat creating a contrast in form and texture to the remaining rope. No additional material has been added to make the seat - it is all made from melted rope.

融化的椅子 | 湯姆·普萊斯

將塑形器加熱並壓入聚丙烯繩球中，使融出一張椅子。繩索與受熱的塑形器接觸後開始液化，並冷卻成座椅，其餘繩索則襯出了彼此間形態和質感的對比。它再無添加任何材料 - 僅僅是融化的繩索。



Meltdown Chair - White

Tom Price | UK
Polypropylene rope
70x95x95 cm

融化的椅子 - 白
湯姆·普萊斯 | 英國
聚丙烯繩



Meltdown Chair - Blue

Tom Price | UK
Polypropylene rope
70x95x95 cm

融化的椅子 - 藍
湯姆·普萊斯 | 英國
聚丙烯繩



Meltdown Chair - Red

Tom Price | UK
Polypropylene rope
70x95x95 cm

融化的椅子 - 紅
湯姆·普萊斯 | 英國
聚丙烯繩

Meltdown Chair: Bronze | Tom Price

The Meltdown Chair: Bronze is made using a 'lost-plastic' casting technique. The original form for the chair, made from polypropylene tubes, is encased in a thick ceramic shell and then melted out to create a cavity into which the molten bronze is poured. Once cooled the ceramic shell is broken away to reveal the bronze form within. The back and underside is left 'raw' and patinated black. The seat is polished to a bright mirror finish.

This is a part of a limited edition of 12. As the ceramic mould must be broken to release the chair, it is necessary to repeat the entire process from the beginning every time one is cast. While this process is very labour intensive, it ensures that every chair in the edition is unique.

融化的椅子 | 湯姆·普萊斯

使用「去塑」鑄造技術製成，椅子的原始形狀由聚丙烯管形塑，被包裹在厚實的陶瓷外殼中，熔成一個空模，再將熔融的青銅倒入，待冷卻後將陶瓷外殼拆開，使銅椅脫模。背面和底面特別保留「原始」淺褐色的樣貌，並將座椅拋光成明亮的鏡面。

此作品限量 12 版。由於必須破壞陶瓷模具，因此每個鑄造過程都必須從頭開始。相當耗時，但可確保每把椅子都是獨一無二的作品。



Meltdown Chair Bronze

Tom Price | UK

Bronze

75x45x45 cm

融化的椅子 - 銅

湯姆·普萊斯 | 英國

銅

委託案例

COMMISSIONING CLIENTS

Amore Pacific Museum of Art
Arario Gallery
Arts Co
Barratt
Bloomberg
Chatsworth House Trust
Denver Museum of Art
Design Days Dubai
Dover Street Market / Comme des Garçons
Future City
Ginkgo Projects Ltd
Gloucestershire County Council
Jumeirah Creekside Hotel

獲獎紀錄

AWARDS

2012 Designer of the Year: Boomspdesign, Brazil
2005 Finalist: BIDA Awards
2005 Finalist: Design and Decoration Awards
2004 Winner: Peter Walker Award for Innovation in Furniture Design

學歷

EDUCATION

2005 - 2007 Royal College of Art MA Design Products
2002 - 2004 London Metropolitan University
HND Furniture Design & Realisation
1993 - 1996 Bath College of Higher Education
BA Hons Fine Art: Sculpture

公共藝術委託案例

PUBLIC COMMISSIONINGS

Hidden River, Keybridge House, Vauxhall (UK); 2019
Vyner Tree, Courthouse, Westminster (UK); July 2014.
Bronze tree & play sculptures for Barratt London.
Kyneburgh Tower & Wall, Kimbrose Square, Gloucester (UK); July 2011.
Two large steel sculptural works.
Speleothem, Royal Terrace Gardens, Torquay (UK); July 2010.
Bronze sculpture.
Metropolitan Works, Digital Manufacturing Centre, London (UK); Sept 2008.
Decorative design, laser-cut into aluminium panels.

公共藝術收藏

PUBLIC COLLECTIONS

Chatsworth House, UK. Counterpart
The Mint Museum, USA. Synthesis X
Denver Museum of Art, USA. Meltdown Chair: PP Tube #1 White
The Nelson-Atkins Museum of Art, USA. Meltdown Chair: PVC Hose
Amore Pacific Museum of Art. Meltdown Chair: PP Tube #1 Black
San Francisco Museum of Modern Art.
Meltdown Chair: Cable Tie Meltdown Chair: PVC Hose
Museum fur Kunst und Gewerbe, Hamburg. Meltdown Chair: PP Sheet

個人展覽

SOLO EXHIBITIONS

2014 The Nelson-Atkins Museum of Art, Kansas City, USA
2013 Balanços Meltdown, Museu da Casa Brasileira, Brazil
2012 Tom Price; Arario Gallery, Seoul, Korea
Tom Price; Meltdown, Showme Gallery, Barcelos, Portugal
2011 Tom Price; Industry Gallery, Design Miami, USA
Tom Price; Industry Gallery, Washington DC, USA
2009 Tom Price; Chapter 7 Concept Store, Hangzhou, China
Tom Price At Oliver Sweeney, London, UK

精選合展

SELECTED GROUP EXHIBITIONS

- 2016 Design Miami Basel
2013 Industry Gallery, Design Days Dubai, UAE
2012 Fairytales Fantasy & Fear; The Mint Museum (Uptown), Charlotte, North Carolina, USA
2010 Hold the Line; Gallery Seine 51, Paris, France
2009 Lodz International Design Biennale; Lodz, Poland
Cheongju International Craft Biennale 2009; Korea
UFO: Art and Design; NRW Forum, Dusseldorf, Germany
2008 Second Lives: Remixing the Ordinary; Museum of Art and Design, New York, USA
From Now to Eternity; Mother Biscuit Building, London, UK
Tent London; Truman Brewery, London, UK
Birds, Bats & Bees; Philips de Pury, London, UK
D3 Talents; International Furniture Fair, Cologne, Germany
2007 Designers Block; Nicholls & Clarke Buildings, London, UK
Gradual; Brompton Design District, London, UK
56x45x25; +Arch Studio, Milan, Italy
2006 Intimacy city; Design Mai, Berlin, Germany
2005 Little Britons (idFX 10 favourite designers), London Interiors, Earls Court, London, UK

出版

PUBLICATIONS

- The Campaign for Art: Gifts for the San Francisco Museum of Modern Art
Foreword by Helen Schwab and Robin Wright
Publisher: San Francisco Museum of Modern Art, 2016

San Francisco Museum of Modern Art 360°: Views on the Collection
Editors Judy Bloch and Suzanne Stein
Publisher: San Francisco Museum of Modern Art, 2016

Taken by Surprise

Editors Robert Klanten, Sven Ehmann, Anna Sinofzik
Publisher: Gestalten; Berlin, 2012

Contemporary Furniture

Author: Martin Wellner and Andrea Mehlhose
Publisher: H.F. Ullmann; Germany, 2009

Desire

Author: Elizabeth Honerla
Publisher: Gestalten; Germany, 2009

Limited Edition

Author: Sophie Lovel
Publisher: Birkhauser; Germany, 2009

London Design Guide 2010 Edition

Author: Max Fraser
Spotlight Press Ltd; London, UK, 2009

New Talents - The State of the Arts

Author: Hans Maier-Aichen
Publisher: Avedition; Ludwigsburg, Germany, 2009

Second Lives: Remixing the Ordinary

Author: Museum of Arts and Design
Publisher: MAD; New York, New York, USA, 2009

The Independent Design Guide: Innovative Products from the New Generation

Author: Laura Housley
Publisher: Thames and Hudson; London, UK, 2009

UFO Blurring the Boundaries Between Art & Design

Werner Lippert / Petra Wenzel
Publisher: NRW-Forum Kultur und Wirtschaft;
Dusseldorf, Germany, 2009

TOM PRICE

我之藝術 iARTs Decor Co., Ltd
www.iartsdecor.com

T. 02-2778-6908 | No. 54283976

台北市大安區仁愛路三段5巷1弄21-1號